

O TANNENBAUM

Chord progression for Eb Instruments (4/4 time):

Chords: C_{maj7}, D_{m7}, G₇, C_{maj7}

Measures 1-5: C_{maj7} (Measures 1-2), D_{m7} (Measures 3-4), G₇ (Measure 5)

Measures 6-10: C_{maj7} (Measures 6-7), D_{m7} (Measures 8-9), G₇ (Measure 10)

Measures 11-15: C_{maj7} (Measures 11-12), D_{m7} (Measures 13-14), G₇ (Measure 15)

Measures 16-20: C_{Maj7} (Measures 16-17), D_{m7} (Measures 18-19), G₇ (Measure 20)

Measures 21-25: C_{maj7} (Measures 21-22), D_{m7} (Measures 23-24), G₇ (Measure 25)

Measures 26-30: C_{maj7} (Measures 26-27), D_{m7} (Measures 28-29), G₇ (Measure 30)

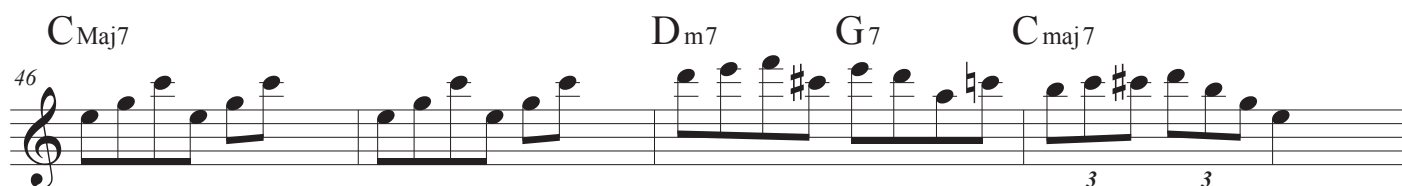
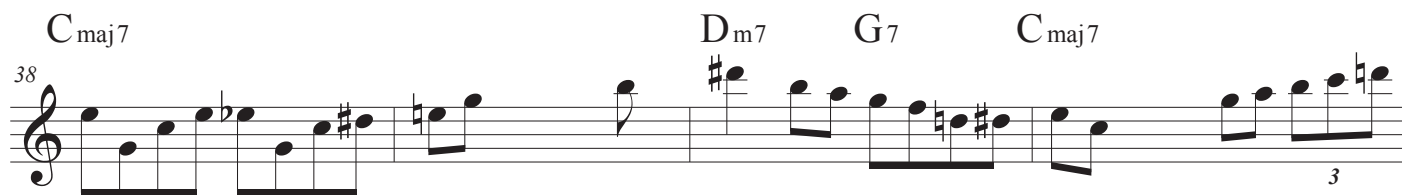
Measures 31-35: C_{Maj7} (Measures 31-32), D_{m7} (Measures 33-34), G₇ (Measure 35)

Measures 36-40: C_{maj7} (Measures 36-37), D_{m7} (Measures 38-39), G₇ (Measure 40)

Measures 41-45: C_{Maj7} (Measures 41-42), D_{m7} (Measures 43-44), G₇ (Measure 45)

Measures 46-50: C_{maj7} (Measures 46-47), D_{m7} (Measures 48-49), G₇ (Measure 50)

O TANNENBAUM



O TANNENBAUM

66 C_{maj7} D_{m7} G₇ C_{maj7} 3

Staff 66-69: Treble clef, key of C major. Measures 66-69. Chords: C_{maj7} (66), D_{m7} (67), G₇ (68), C_{maj7} (69). Measure 69 contains a triplet of eighth notes.

70 C_{maj7} D_{m7} G₇ C_{maj7}

Staff 70-73: Treble clef, key of C major. Measures 70-73. Chords: C_{maj7} (70), D_{m7} (71), G₇ (72), C_{maj7} (73).

74 C_{maj7} D_{m7} G₇ C_{maj7}

Staff 74-77: Treble clef, key of C major. Measures 74-77. Chords: C_{maj7} (74), D_{m7} (75), G₇ (76), C_{maj7} (77). Measures 75-77 contain triplets of eighth notes.

78 C_{Maj7} D_{m7} G₇ C_{maj7}

Staff 78-81: Treble clef, key of C major. Measures 78-81. Chords: C_{Maj7} (78), D_{m7} (79), G₇ (80), C_{maj7} (81). Measures 78-79 contain eighth notes with beams.

82 C_{maj7} D_{m7} G₇ C_{maj7}

Staff 82-85: Treble clef, key of C major. Measures 82-85. Chords: C_{maj7} (82), D_{m7} (83), G₇ (84), C_{maj7} (85). Measure 83 contains a triplet of eighth notes.

86 C_{maj7} D_{m7} G₇ C_{maj7}

Staff 86-89: Treble clef, key of C major. Measures 86-89. Chords: C_{maj7} (86), D_{m7} (87), G₇ (88), C_{maj7} (89). Measure 87 contains a dotted quarter note.

90 C_{maj7} D_{m7} G₇ C_{maj7}

Staff 90-93: Treble clef, key of C major. Measures 90-93. Chords: C_{maj7} (90), D_{m7} (91), G₇ (92), C_{maj7} (93). Measures 90-91 contain eighth notes with beams.

94 C_{maj7} D_{m7} G₇ C_{maj7}

Staff 94-97: Treble clef, key of C major. Measures 94-97. Chords: C_{maj7} (94), D_{m7} (95), G₇ (96), C_{maj7} (97). Measure 95 contains a triplet of eighth notes.

O TANNENBAUM

4

C_{maj7}

D_{m7}

G₇

C_{maj7}

98



C_{maj7}

D_{m7}

G₇

C_{maj7}

102



C_{maj7}

D_{m7}

G₇

C_{maj7}

106



C_{Maj7}

D_{m7}

G₇

C_{maj7}

110

